

# Marshall

BROADCAST & **PRO AV**

# NDI<sup>®</sup>|HX Camera Upgrade Installation Guide

<b>Quick Installation Guide- Windows.....</b>	<b>2</b>
<b>Complete Installation Guide-Windows.....</b>	<b>3</b>
<b>Complete Installation Guide-OS X.....</b>	<b>8</b>

*IMPORTANT: Your NDI<sup>®</sup>|HX license key is non-transferrable. If for any reason your camera requires a restore to factory default settings, you can reinstall your NDI<sup>®</sup>|HX upgrade by repeating the steps in this installation guide with your original license key.*

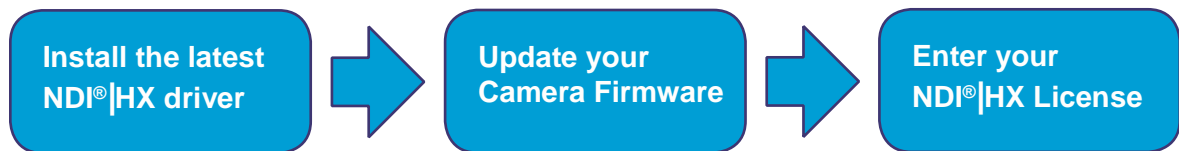
## Quick Installation Guide-Windows

Please read all instructions prior to attempting your NDI<sup>®</sup>|HX camera upgrade.

Thank you for purchasing the NDI<sup>®</sup>|HX upgrade for your camera.

This installation guide will walk you through the steps to make your camera immediately available as an NDI<sup>®</sup> source for all compatible systems, devices, and software on your network.

### Three Easy Steps



### Step 1

Download & install the NDI<sup>®</sup>|HX driver <http://new.tk/NDITools>

• *Note: NDI|HX driver is part of NDI Tools, a free suite of applications designed to introduce you to the world of IP. Learn More at <https://www.newtek.com/ndi/tools/>*

### Step 2

#### Download camera firmware & update

- Ensure that both your Windows<sup>®</sup> computer or device and camera are connected to the same local network via standard Ethernet cable.
- From your computer or device, open NewTek NDI<sup>®</sup> Studio Monitor (installed with your NDI Tools) and select your camera model from the upper-left menu. Then click “Upgrade” in the bottom-right corner.
- From the dialog box, select “Download latest firmware” and then “Update firmware on Camera” when download is complete.

### Step 3

Enter your NDI<sup>®</sup>|HX license key & click “Enable NDI<sup>®</sup>|HX”

• *Note: NDI<sup>®</sup>|HX license key is available for purchase on [store.newtek.com](http://store.newtek.com)*

## Complete Installation Guide-Windows

### Download & install the NDI<sup>®</sup>|HX driver

- Follow this link to download your NDI<sup>®</sup>|HX driver from the NewTek website.  
<http://new.tk/NDITools>
- Install the driver on your Windows<sup>®</sup> device.

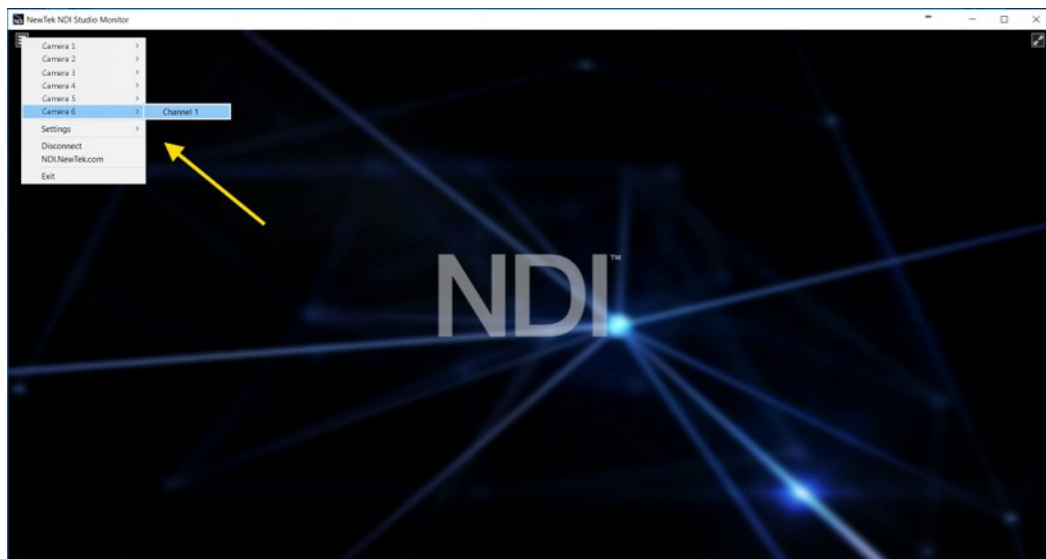
*Note: This will also install NewTek NDI<sup>®</sup> Studio Monitor*

### Update Your Camera Firmware & Upgrade to NDI<sup>®</sup>|HX

- With the NDI<sup>®</sup>|HX driver installed on your Windows<sup>®</sup> device, ensure that both your Windows<sup>®</sup> device and camera are powered and connected to the same local network via standard Ethernet cable.

*If you are using a switch (without a router), you may need to manually configure the network settings on your Windows<sup>®</sup> computer or device.*

- From your Windows<sup>®</sup> computer or device, open the NewTek NDI<sup>®</sup> Studio Monitor application (installed with your NDI<sup>®</sup>|HX driver) to finish the process.
- Click the menu icon in the upper-left corner to view all the available NDI<sup>®</sup> sources, then locate and select your camera.

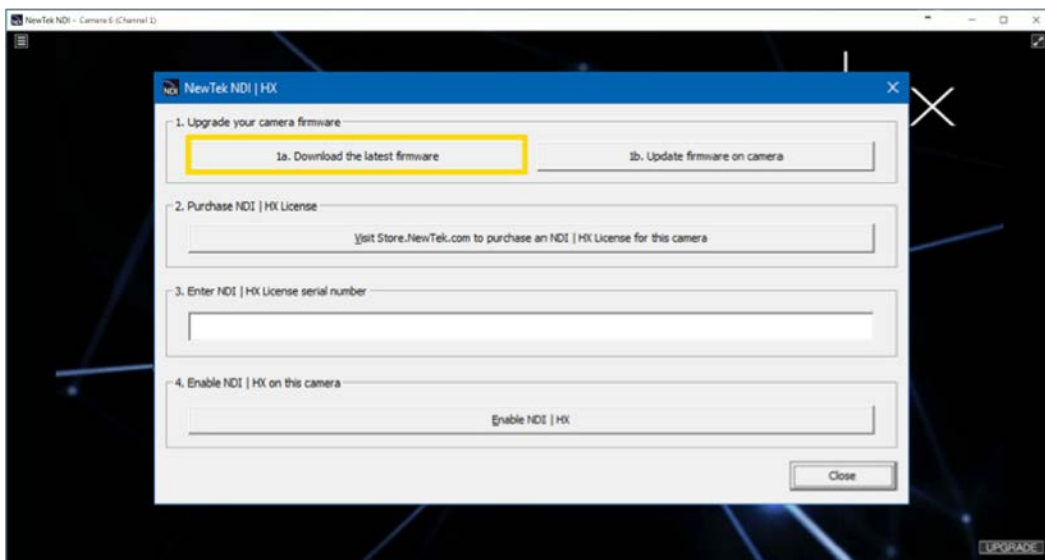


**IMPORTANT:** *Your camera must be connected to the same local network as the Windows<sup>®</sup> computer or device with your NDI<sup>®</sup>|HX driver installed to proceed.*

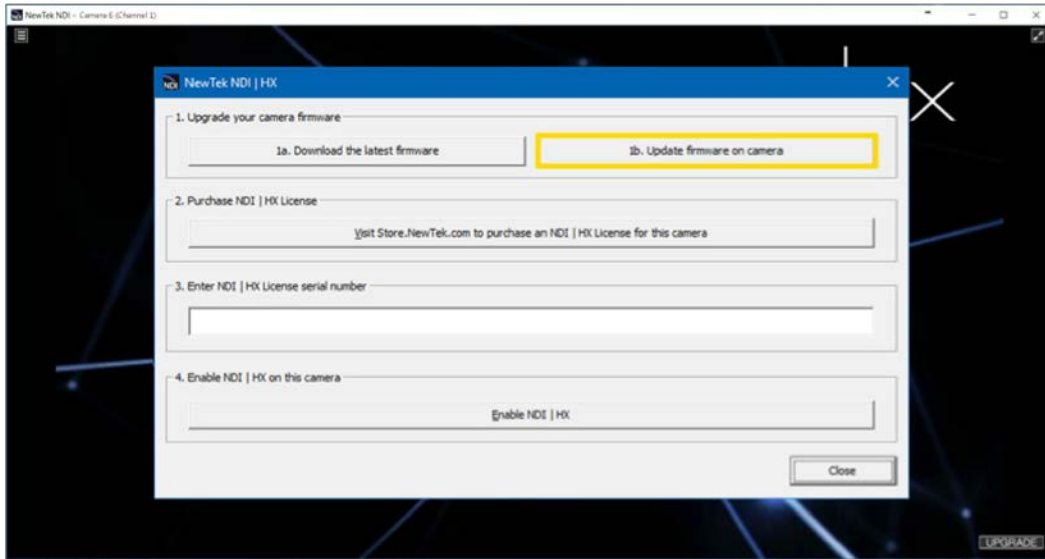
- With your camera selected, click on the UPGRADE button in the bottom-right corner of the NewTek NDI® Studio Monitor window.



- After the dialog box opens, click on the **1a.** button to download the latest firmware for your camera. You will be redirected to the camera manufacturer's website. Locate the proper firmware for your camera and download it, along with any instructions for the firmware update.

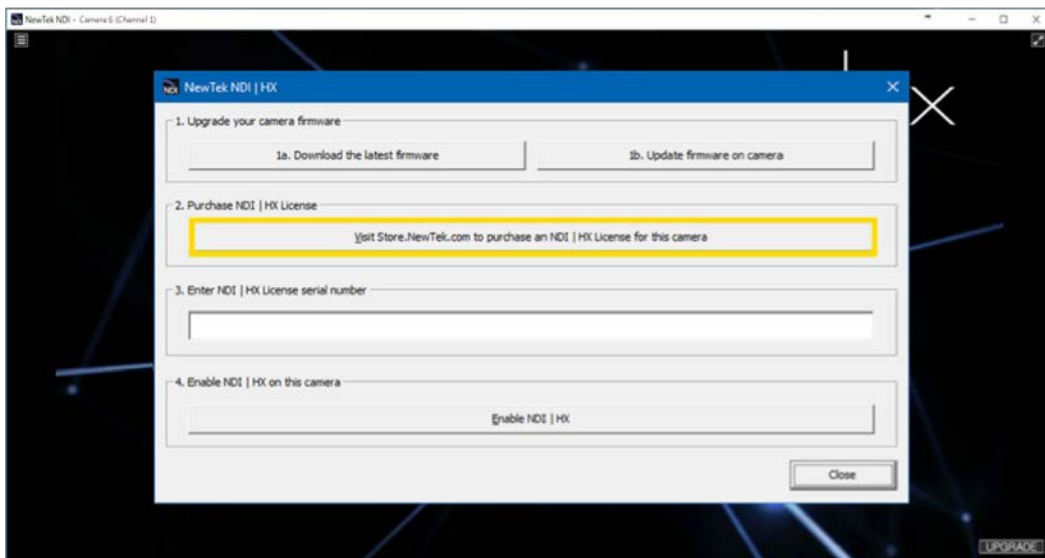


- With the firmware downloaded on your computer, click on the **1b.** button. This will take you to the camera's web control page where you can finish the firmware update process following the instructions from the camera manufacturer.



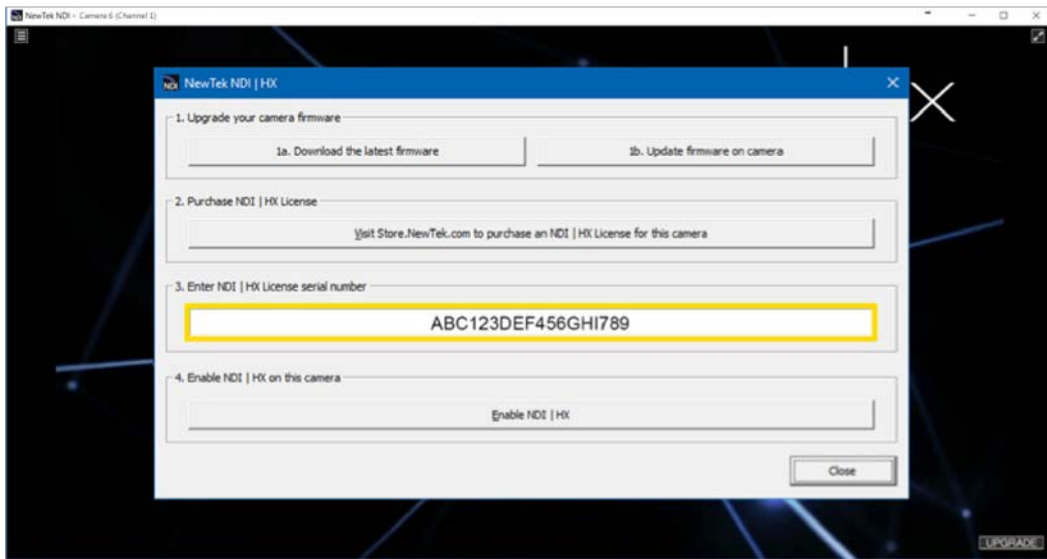
*If you have already purchased a NDI®|HX license for your camera please skip the following step.*

- Once the firmware has been updated, click on the **2.** button to purchase an NDI®|HX license for your camera. You will be redirected to the NewTek Store to complete the purchase. Once the transaction is complete, you will receive a confirmation email with the NDI®|HX **license key** within a few minutes.

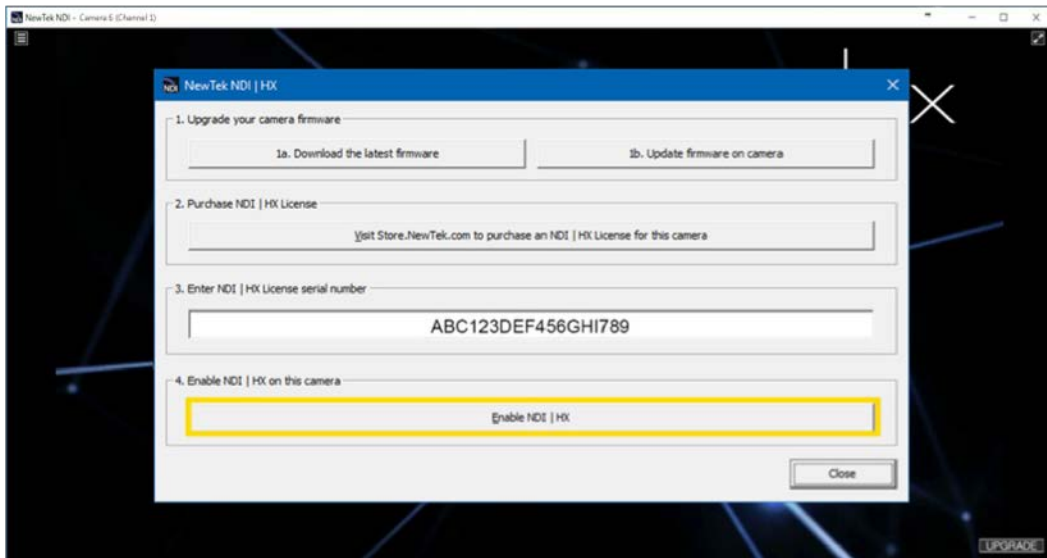


**IMPORTANT:** Please have the order confirmation email available or otherwise copy the license key number for reference before you proceed.

- Enter the **license key** for your camera that was included with the confirmation email in the number **3.** text box.



- Click on the **4.** button to enable NDI® | HX on your camera.



- Configure and control your camera using the on-screen user interface.



Once registered, you can use your camera over the network with any other NDI<sup>®</sup>-compatible system, device, or software, performing the standard functions for locating an NDI<sup>®</sup> source and designating for video input.

If you have additional cameras to upgrade, please repeat the steps in this installation guide as required to enable NDI<sup>®</sup>|HX. A separate NDI<sup>®</sup>|HX license key is required for each camera.

## Complete Installation Guide-OS X

### Download & install the NDI<sup>®</sup>|HX driver

- Follow this link to download your NDI<sup>®</sup>|HX driver from the NewTek website.  
<http://new.tk/NDIHX-Driver-OSX>
- Install the driver on your OS X device.

### Update Your Camera Firmware & Upgrade to NDI<sup>®</sup>|HX

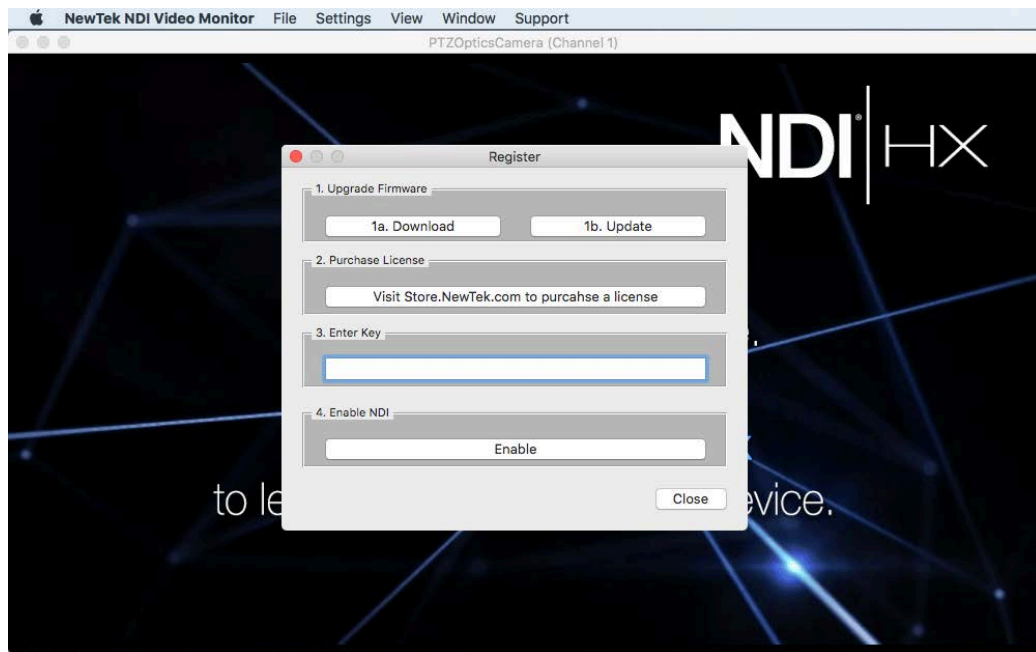
- With the NDI<sup>®</sup>|HX driver installed on your OS X device, ensure that both your OS X device and camera are powered and connected to the same local network via standard Ethernet cable.

*If you are using a switch (without a router), you may need to manually configure the network settings on your OS X computer or device.*

- From your OS X computer or device, open the NewTek NDI<sup>®</sup> Video Monitor application (install link for NDI Video Monitor <http://new.tk/NDIHX-Driver-OSX>) to finish the process.
- Select "Register Device" from the Settings menu, as shown.







- After the dialog box opens, click on the **1a.** button to download the latest firmware for your camera. You will be redirected to the camera manufacturer’s website. Locate the proper firmware for your camera and download it, along with any instructions for the firmware update.
- With the firmware downloaded on your computer, click on the **1b.** button. This will take you to the camera’s web control page where you can finish the firmware update process following the instructions from the camera manufacturer.
- Once the firmware has been updated, click on the **2.** button to purchase an NDI<sup>®</sup>|HX license for your camera. You will be redirected to the NewTek Store to complete the purchase. Once the transaction is complete, you will receive a confirmation email with the NDI<sup>®</sup>|HX **license key** within a few minutes.
- Enter the license key for your camera that was included with the confirmation email in the number 3. text box.
- Click on the 4. button to enable NDI<sup>®</sup>|HX on your camera.
- Once registered, you can use your camera over the network with any other NDI<sup>®</sup>-compatible system, device, or software, performing the standard functions for locating an NDI<sup>®</sup> source and designating for video input.
- If you have additional cameras to upgrade, please repeat the steps in this installation guide as required to enable NDI<sup>®</sup>|HX. A separate NDI<sup>®</sup>|HX license key is required for each camera.