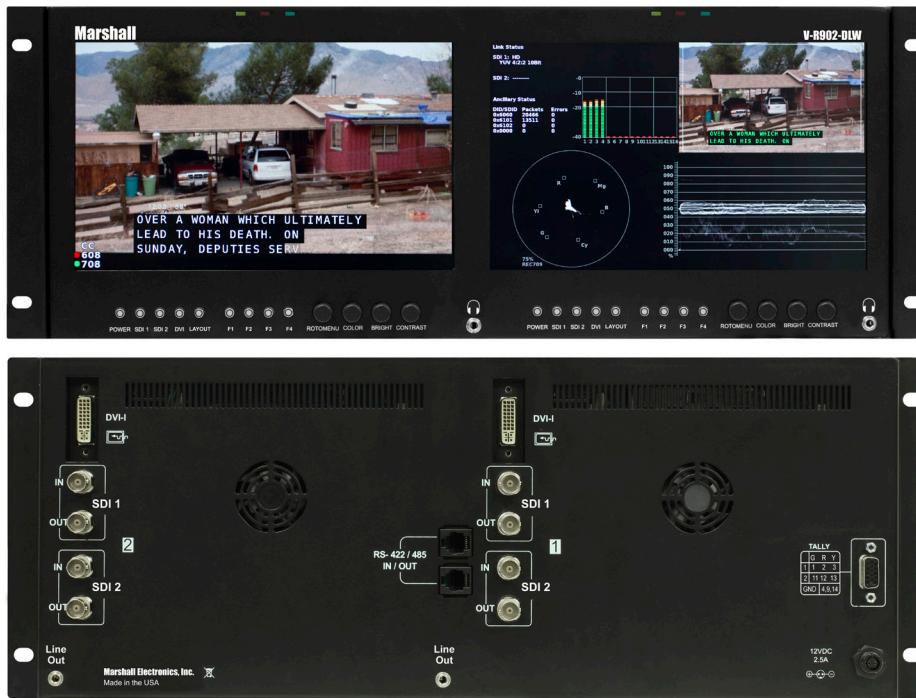


## V-R902-DLW

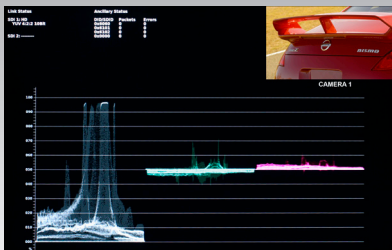
## Dual 9" display monitor with IMD (In-Monitor Display)



Price: \$ 5,299.00

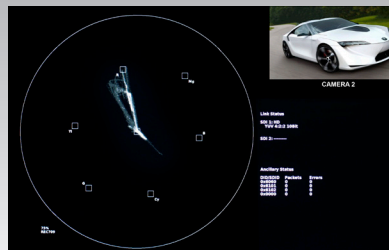
Marshall Electronics' **V-R902-DLW** Dual 9" (1280 x 768) display monitor is the latest addition to the expanding line of IMD (In-Monitor Display) Monitors. The V-R902-DLW monitor includes Dual Link with Waveform & Vectorscope, incorporates a 10-bit "no compromise" video path and is equipped with 3G capability. In Quad-View mode, the monitors break the screen into four quadrants to display Audio Bars, a Waveform Monitor, Vectorscope, and live video simultaneously. Both screens have two inputs supporting 3G / HD / SDI and Dual Link. A DVI input supports all HDMI modes and DVI to 170MHz. Additional features include IMD protocol support for TSL, NVISION, Image Video, and MEI (Marshall Electronics) tally control systems, remote firmware update via RS-485, tri-color hard and soft tally, and Safety Marker configurations. Other display features include full CEA-608-B and CEA-708-B Closed Captioning.

## FEATURES



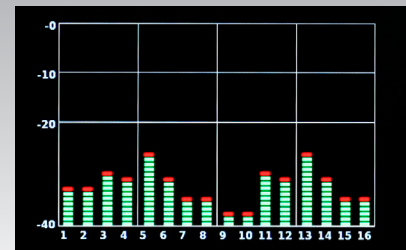
### WAVEFORM MONITOR

The built-in waveform monitor can be displayed in various aspect ratios, positions, and transparency options. The waveform monitor displays YUV/RGB in both Overlay and Parade modes.



### REAL-TIME VECTORSCOPE

The built-in Vectorscope allows users to monitor color gamut range in real time. It displays in various sizes, positions, and transparency options.



### AUDIO LEVEL METERS

De-embeds and displays up to 16 channels of audio using sixteen 40-segment tri-color Audio Meters with user-adjustable reference levels

Features include IMD protocol support for TSL, NVISION, Image Video, and MEI (Marshall Electronics) tally control systems, remote firmware update via RS-485, tri-color hard and soft tally, and Safety Marker configurations. Other display features include full CEA-608-B and CEA-708-B Closed Captioning.

### Closed Captioning Decoding

The DLW monitor allows for decoding of Closed Captioning in the EIA-608 or EIA-708.

## In-Monitor Display

In-Monitor Display allows on-screen text and tally indication, controlled locally or remotely via a variety of industry standard protocols.

## OSD Features (On Screen Display)

Embedded time code and an embedded audio presence indicator can be displayed on the screen in a variety of configurations. Closed Caption presence indication is also provided for 608/708 captions.

## Advanced Features

Color temperature adjustment, aspect ratio settings, blue-only mode, and monochrome mode are a few of the advanced features allowing the V-R902-DLW to be at home in any broadcast environment. Pixel-to-Pixel mode also allows native display of any incoming image format.

## Four User-Definable Function Buttons

Four user-definable function buttons allow quick access to numerous settings and features including aspect ratio, monochrome mode, color temperature, and more.

### Inputs:

- 2 x 3G-SDI inputs with loop-through and SD-SDI, HD-SDI, & 3G-SDI support. SDI inputs can be used in tandem to do dual link
- 1 x DVI-D input: supports digital DVI, HDMI (without audio), Analog video (RGB, YPbPr)

### Processing:

- 10-bit image processor
- 4x3 and 16x9 aspect ratios
- High quality motion adaptive deinterlacer
- Time-code (LTC / VITC)
- 608/708 closed captioning
- Waveform monitor
- Vectorscope
- Ancillary data window
- 16 channels of audio metering (SDI inputs only)
- Standard Marshall IMD processing
- RotoMenu™ controlled OSD
- Four programmable function buttons
- System statistics monitoring in OSD
- Variety of markers

### Miscellaneous:

- Hard TALLY (Red, Yellow, Green LEDs)
- Soft TALLY (in IMD)
- RS-485 interface supports Marshall, Image Video and TSL protocols
- System supports color calibration
- RS-485 based firmware update

## SPECS

Display (Viewing Area)	9.0" Diagonal (200.0mm x 120.0mm)
Resolution (Pixels)	1280 x 768
Contrast Ratio	1000:1
Brightness (cd/m <sup>2</sup> )	350
Available Inputs per Screen	3GSDI x 2, DVI-I x 1
Standard Inputs (included)	DVI, 3GSDI
Dimensions	18.93" W x 6.9" H x 2.84" D

Features, specifications, pricing, and dimensions are subject to change without notice.  
Physical appearance of products may vary slightly from images shown on this document. Please visit our website for updates and information.